



Meadow View, Wonston, Hazelbury Bryan

Myddelton&Major



The Vicarage Meadow View, Wonston, Hazelbury Sturminster Newton, Dorset, DT10 2EE

- DETACHED HOUSE
- 3 RECEPTION ROOMS
- LARGE GARDEN
- 6 MONTH LET
- 4 DOUBLE BEDROOMS
- GARAGE
- FAR-REACHING COUNTRY VIEWS
- PET FRIENDLY

The Property

A detached and spacious house nestled in a rural position at the end of a cul-de-sac with stunning views stretching far across the countryside. The expansive accommodation provides a kitchen, separate dining room, living room & study on the ground floor and 4 double bedrooms, one with ensuite and a family bathroom. The property further benefits from a large garden, garage and a driveway for up to 4 vehicles.

Location

The property is set in a large rural village consisting of several hamlets in the heart of the Blackmore Vale and is surrounded by beautiful countryside at the foot of Bulbarrow Hill. There is an active community and Wonston benefits from a recreation field, cricket club, church, primary school, village hall, shop and pub. Nearby towns with full amenities include, Sturminster Newton (4 miles), Sherborne with main line railway links to London (10 miles) and Blandford (12 miles).

Tenancy & Restrictions

To be let unfurnished on an Assured Shorthold Tenancy (6 month term). No smokers or sharers.

A detached house set on the edge of this pretty village, with well-presented and flexible accommodation and large garden.

Size: 1,497 sq ft

Council Tax: Dorset £3683.36
(2025/26), Band F



Dilapidation Deposit: Equivalent to 5 weeks' rent, to be held by The Deposit Protection Service for the duration of the tenancy.

Holding Deposit: Equivalent to one weeks' rent.

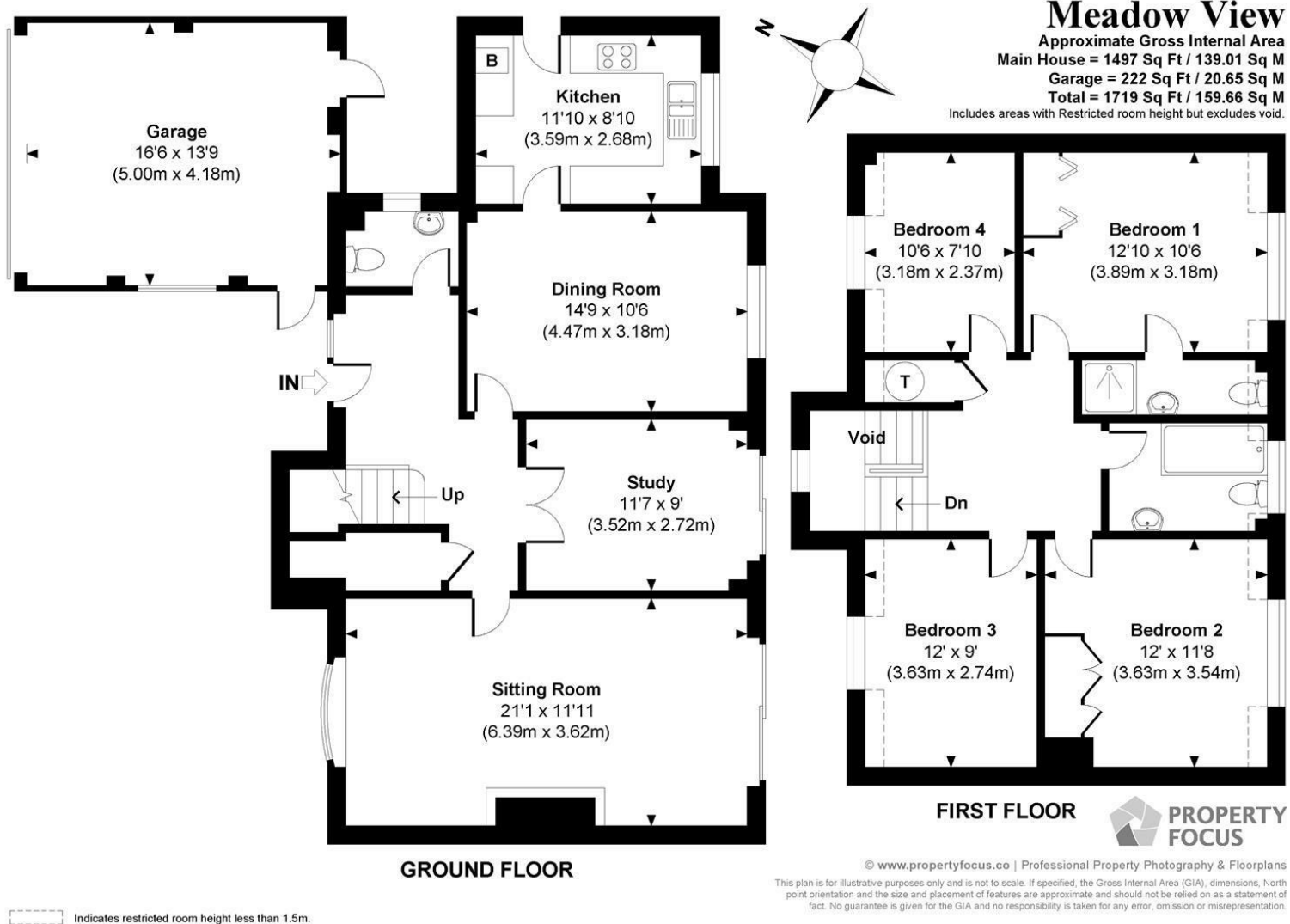
Services: Mains electricity, water and telephone. Oil fired central heating and hot water.

Other Fees: See Website.





Energy Efficiency Rating		
Very energy efficient - lower running costs	Current	Potential
A (92 plus)		
B (81-91)		
C (69-80)		
D (55-68)		
E (39-54)		
F (21-38)		
G (1-20)		
Not energy efficient - higher running costs		
EU Directive 2002/91/EC		
England & Wales		



Disclaimer Notice:

Myddelton & Major and their clients give notice that:- i) they have no authority to make or give any representations or warranties in relation to the property, ii) these particulars do not form part of any offer or contract and must not be relied upon as statements or representation of fact. iii) any area, measurement or distances are approximate. The text, photographs and plan are for guidance only and are not necessarily comprehensive. It should not be assumed that the property has all the necessary planning, Building Regulation or other consents, and, any services, equipment or facilities have not been tested by the agent. iv) the purchaser must satisfy themselves by inspection or otherwise.



49 High Street, Salisbury, Wiltshire SP1 2PD
 01722 337 579 lettings@myddeltonmajor.co.uk
 www.myddeltonmajor.co.uk

Myddelton & Major